

Electric High Level Order Picker

Model : T-OPS15

Electric high level order picker provides safety and high efficiency order picking for high racked warehouse.

Max. lift height
354 inch

AC

EPS



Pallet Lock device



Steering and speed adjusting device



Light and fan

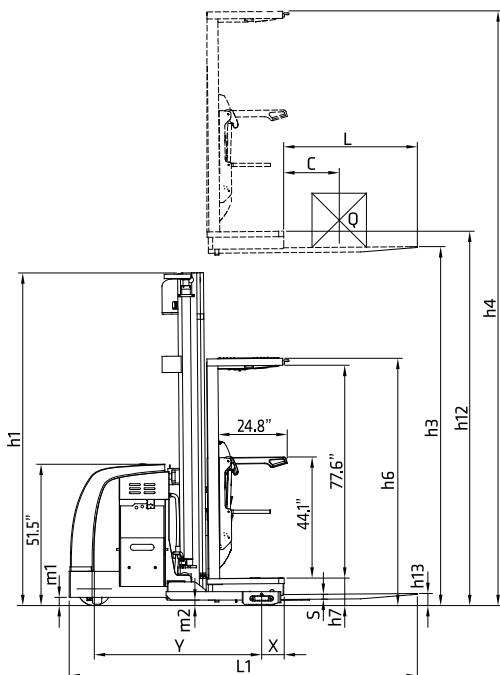
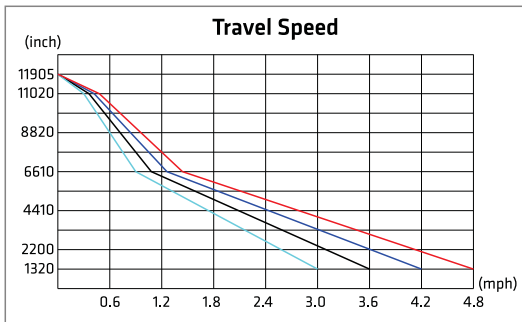
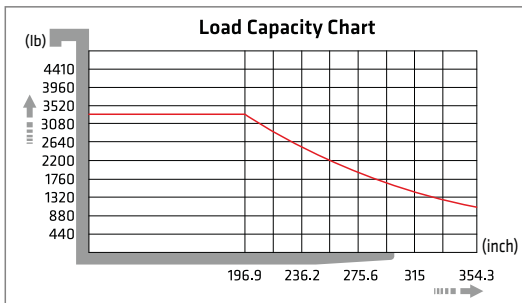
Advantages :

- Low gravity centre provides good stability.
- Advanced electric steering technology(EPS) is humanized designed, with automatic reset, height display and automatic deceleration at high lifting level.
- Finger tip control via joystick, Stepless speed control for driving, lifting and lowering speed is adjustable.
- Buffer oil cylinder: the oil cylinder will automatic decelerate when off ground 500mm, to prevent impact and lower noises.
- The mast and the frame are dividable and exchangeable.
- Low battery protection setting prolongs the battery use time.
- AC motor eliminates replacement of the carbon brush, provides good ramp starting performance and regenerative breaking functions.
- Sideway battery is convenient for exchanging and maintaining.
- The mast material is the special type imported from Germany.
- The truck can automatic decelerate when quick turning.
- High performance multi-function instrument has LED light and display function. LED indicators include battery indicator, fault indicator, Electric thermometer indicator, pedal indicator and hand break indicator.
- Multi function display, include battery status, performance, working hour, accelerator, speed, the wheel position and traveling direction.
- Press right and left keys to switch for different grades : high, normal, low, and lowest.



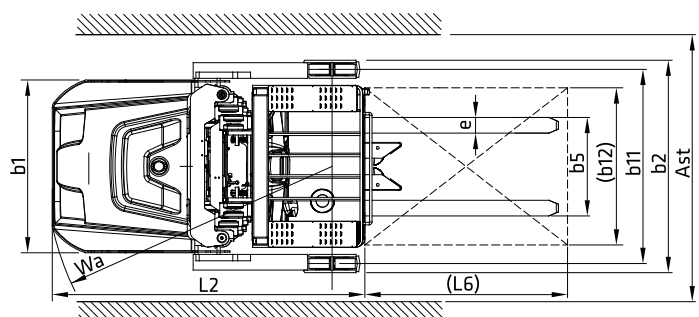


Conforms to EN ISO3691-1
 EN1175-1
 EN16307-1
 Based on Directive 2006/42/EC
 Conform to EN Standard 12895
 Based on directive: 2014/30/EU (EMC)



Model	T-OPS15	
Drive type	Battery	
Load capacity / rated load	Q (lb)	3300
Load centre distance	C (inch)	23.6
Load distance, centre of drive axle to fork	X (inch)	8.1
Tyre size (front)	inch	φ 12.2 x 4.9
Tyre size (rear)	inch	φ 5.0 x 2.9
Additional wheel	inch	φ 5.9 x 1.8
Wheels, number front rear (x=driven wheels)	1x+2/4	
Height (mast lowered)	h1 (inch)	94.9 / 121.3 / 147.6
Max. lift height	h3 (inch)	196.9 / 275.6 / 354.3
Height (mast extended)	h4 (inch)	284.6 / 363.4 / 442.1
Height of platform	h7 (inch)	9.1
Lowed height	h13 (inch)	3.1
Overall length	L1 (inch)	126
Coupling height	L2 (inch)	77.8
Overall width	b1/b2 (inch)	43.3 / 53.2
Forks length	S x E x L (inch)	1.8 / 3.9 / 48
Width overall forks	b5 (inch)	20.9 / 28.1
Height of over head guard	b6 (inch)	90.2
Aisle width for pallets 39.4"x 47.2" crossways	Ast (inch)	55.1
Aisle width for pallets 31.5"x 47.2" lengthways	Ast (inch)	55.1
Turning radius	Wa (inch)	70.9
Travel speed (laden / unladen)	mph	4.8 / 5.0
Lift speed (laden / unladen)	mph	0.33 / 0.63
Lowering speed (laden / unladen)	mph	0.63 / 0.67
Battery voltage, nominal capacity K5	V / Ah	24 / 770 (1100)
Battery weight	lb	1345 (1874)
Battery dimensions (L x W x H)	inch	38.7 x 15.6 x 22.1
Service weight (with battery)	lb	8532

Option: T-OPS15 for 5-7M Lithium battery 500 Ah (Charger 24V / 200A)
 T-OPS15 for 9M Lithium battery 750 Ah (Charger 24V / 200A)



TAILIFT MATERIAL HANDLING TAIWAN CO., LTD.

No. 5, Zili 1st Road, Nankang Industrial Zone, Nantou city 540, TAIWAN
 Tel: +886-49-2263800 Fax: +886-49- 2252919
 Website: www.tailift.com E-mail: insales@tailift.com.tw

TAILIFT MATERIAL HANDLING USA, Inc.

5550 Jurupa St, Ontario, CA 91761
 TEL: (909) 930-9801, (909) 930-9802 FAX: (909) 930-9739
 Website: www.tailift-usa.com

